

JIMECA



the hook lift makers



JIMECA



the hook lift makers

CONTENTS

ABOUT US

3

PRODUCTS

5

HOOKLIFT

5



MULTITRAILER

7



MULTIAGRI

9



CONTAINERS

11



ACCESSORIES

13

PRODUCTION PROCESS

15

QUALITY

17

LOGISTICS

18

ABOUT US

Founded in 1985, **JIMECA** started operations with the work of its 7 founders as only employees in a facility of just 800m². Today, having produced more than 23,000 units of hooklift equipment, the company has 200 employees distributed in various departments in an area of 86.000m².

Our work team is the most important company asset. **JIMECA** consists of staff with extensive experience, well trained, motivated and caring, which makes our company a reference in the industry.

JIMECA products offer convenient, secure and user-friendly logistics solutions and can be used in many different areas: urban waste management, clean points and recycling bins, forestry waste, agricultural work, junkyard, construction, and more... In any of these environments, we can evidence the versatility of hooklifts and their various bodies and

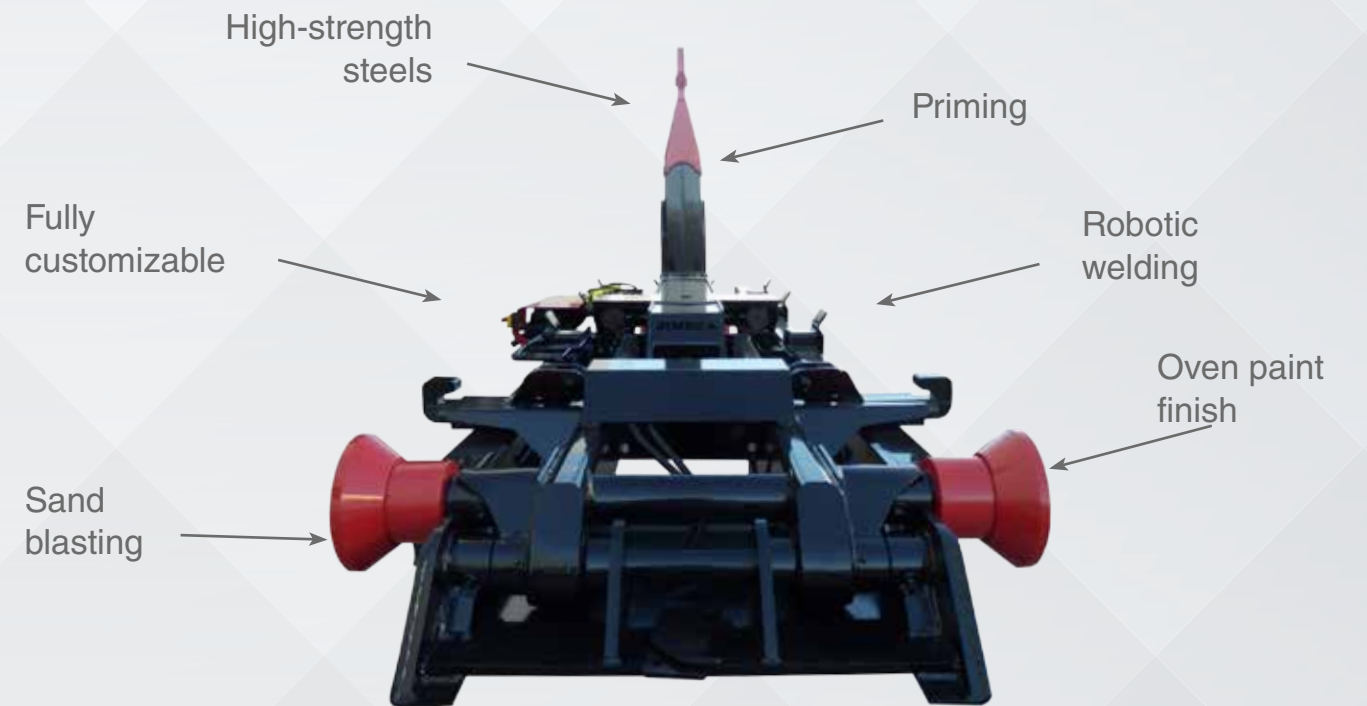
containers, ensuring robustness, reliability and security at all times.

The company's success is based on the realization of our own-patented designs as published in the Bulletin of Industrial Property, under container loading and unloading hooklift devices for industrial vehicles, where almost the entirety of our work is focused. We use only premium materials and integrate the latest technological advances.

JIMECA produces 95% of industrial hooklifts in Andalusia and 70% in Spain, and has reached the international market in countries including France, Ireland, Netherlands, England, Brazil, Chile, Colombia, Germany, Portugal, and others. Our interchangeable container hooklift loading and unloading device by **JIMECA** is manufactured in any size and capacity as desired; to match many truck models according to the desired functions.



HOOKLIFTS



QUALITIES

- Sand blasting
- Robotic welding
- Priming
- Drying oven paint finish
- High-strength steels
- Fully customizable

APPLICATIONS

- Transportation of containers and platforms:
 - Machinery platforms
 - Container with crane
 - Irrigation tank
 - Container for junkyard
 - Construction waste
 - Forestry waste management
 - Gardening and pruning
 - Clean Points management
 - Worksite shelters
- Vehicle versatility
- Ability to use container without the need to immobilize the vehicle



TRAILERS



QUALITIES

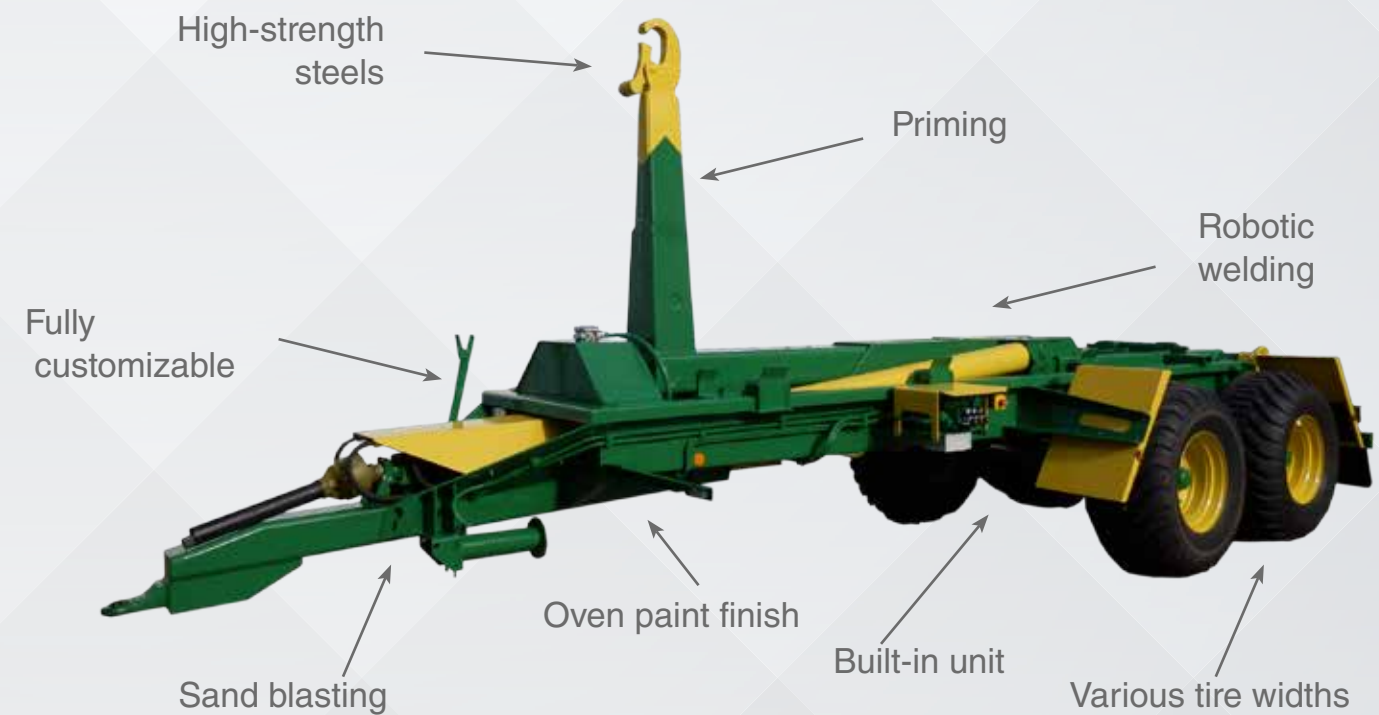
- Sand blasting
- Robotic welding
- Priming
- Drying oven paint finish
- High-strength steels
- Fully customizable
- Built-in equipment to lower loading height
- Option for movable rear rollers to facilitate container handling

APPLICATIONS

- Transportation of containers and platforms:
 - Machinery platforms
 - Containers with crane
 - Irrigation tank
 - Container for junkyard
 - Construction waste
 - Forestry waste management
 - Gardening and pruning
 - Clean Points management
 - Worksite shelters
 - Urban waste (Compactors)
- Vehicle versatility
- Ability to use container without the need to immobilize the vehicle



MULTIAGRI



QUALITIES

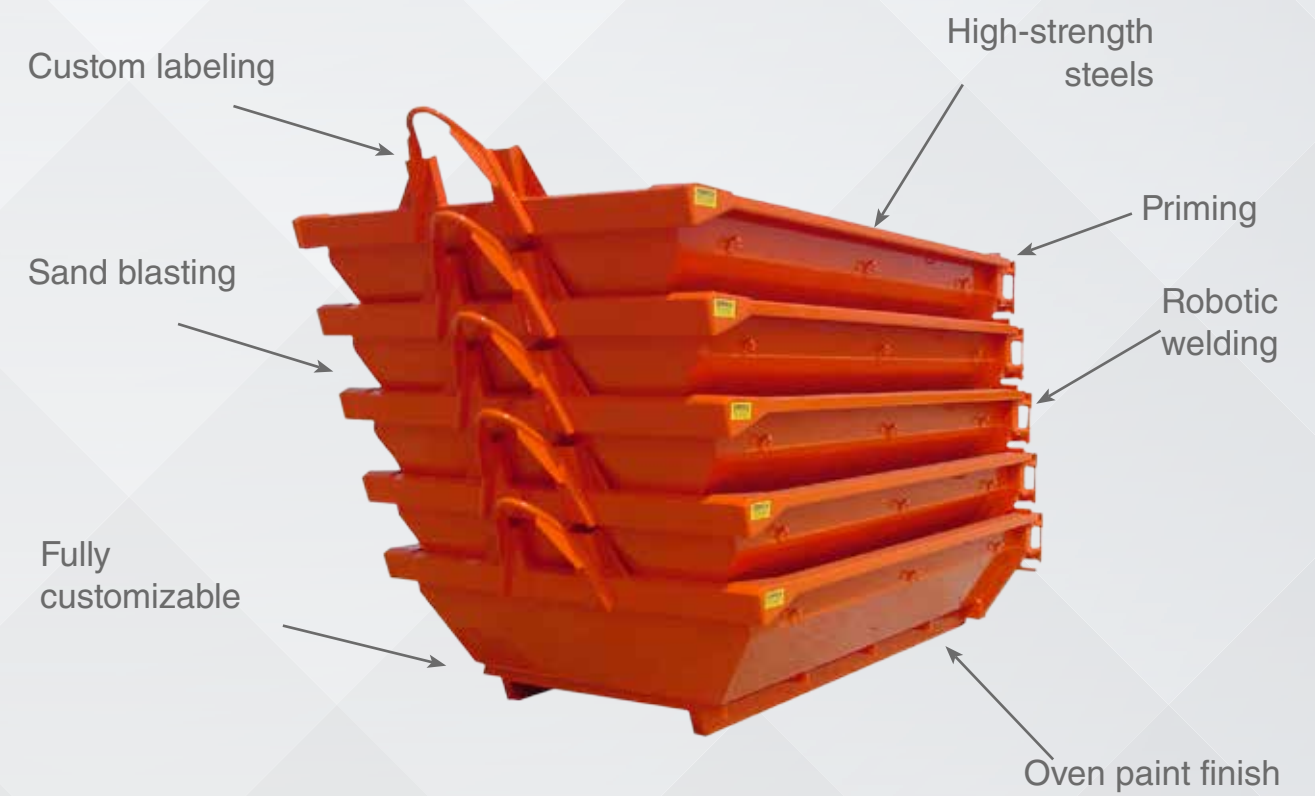
- Sand blasting
- Robotic welding
- Priming
- Drying oven paint finish
- High-strength steels
- Fully customizable
- Built-in equipment to lower loading height
- Various tire widths

APPLICATIONS

- Transportation of containers and platforms:
 - Machinery platforms
 - Containers with crane
 - Irrigation tank
 - Container for junkyard
 - Construction waste
 - Forestry waste management
 - Gardening and pruning
 - Clean Points management
 - Worksite shelters
- Vehicle versatility
- Ability to use container without the need to immobilize the vehicle



CONTAINERS

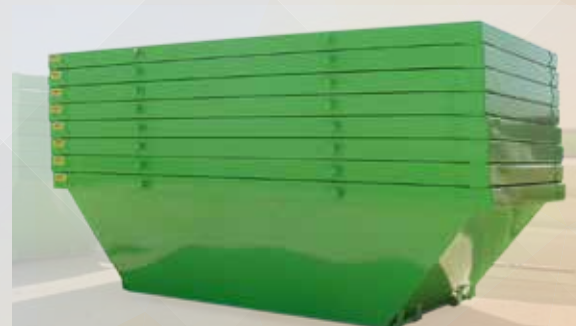


QUALITIES

- Sand blasting
- Robotic welding
- Priming
- Drying oven paint finish
- High-strength steels
- Fully customizable
- Built-in equipment to lower loading height

APPLICATIONS

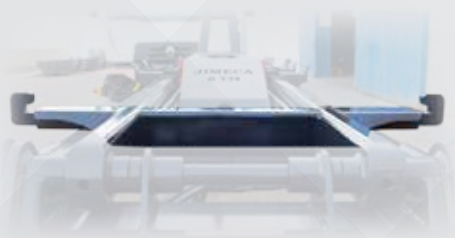
- Types of containers:
 - Machinery platforms
 - Dropside containers
 - Containers with built-in crane
 - Irrigation tank
 - Container for junkyard
 - Construction waste
 - Forestry waste management
 - Gardening and pruning containers
 - Clean Points management containers
 - Chain containers
 - Urban waste (compactors)



ACCESSORIES

Our products are fully customizable.
The following optional equipment is available:

HYDRAULIC LOCK



REAR-SUPPORT HYDRAULIC CONTAINER



ARTICULATED ARM



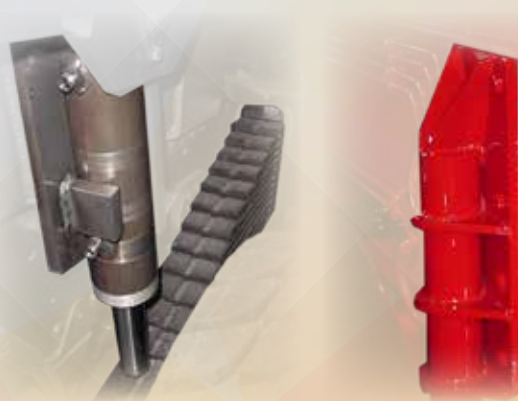
ARTICULATED AND DISPLACEABLE ARM



HYDRAULIC ARM



CROSSBOW LOCK



ROLLERS



REMOTE CONTROL



PAINTING AND LABELING



DRILLS



SPEED VALVE



COVER DISTRIBUTOR



LIGHT SIGNAL



SOUND SIGNAL



CRANES



REAR BUMPER



HEAVY-DUTY TRAILER



PRODUCTION PROCESS

The manufacturing process of our products uses the latest technology in robotics and machinery, which enables us to offer top-quality products at competitive prices, making our products the best solution for your needs in terms of quality, reliability, robustness and cost.

Our technical department performs a preliminary study of the vehicle where the hooklift equipment will be installed, as well as

models that support it, by analyzing various modifications that will later be carried out and advising the customer on how to optimize the installation's performance and quality.

Being customizable, **JIMECA** products have great versatility: we adapt to your needs, offering an array of options and extras to meet even the most specific demand.

SAND BLASTING



OXYCUTTING AND PLASMA



ROBOTIC WELDING



NUMERICAL CONTROL BAND SAW



BENDING ROBOT



WELDING ROBOT



PAINTING BOOTH



NUMERICAL CONTROL WINCH



QUALITY



Currently, all our devices are C-MARKED in addition to having implemented the quality management system according to ISO 9001: 2008, as certified by the VERITAS BUREAU.

Similarly, all our suppliers comply with their quality certificates, which also enables us to ensure reliability of assemblies made with their collaboration.

LOGISTICS

We specialize in optimizing shipping container and truck loads to minimize logistics costs.



JIMECA |

the hook lift makers

Ctra. Arahal-Morón, km. 0,5
CP. 41600 Arahal (Sevilla)
T. +34 954 840 579 - Fax. +34 955 842 144
ventas@jimeca.com
www.jimeca.com